

BEALS LYON ARQUITECTOS    Alejandro Beals - Loreto Lyon

BEALS LYON ARQUITECTOS    Alejandro Beals - Loreto Lyon

BEALS LYON ARQUITECTOS    Alejandro Beals - Loreto Lyon



MUNICIPALIDAD DE NANCAGUA

Concurso Público: 1er Lugar. Nancagua, Chile. 2012-2016



Nancagua, 2010



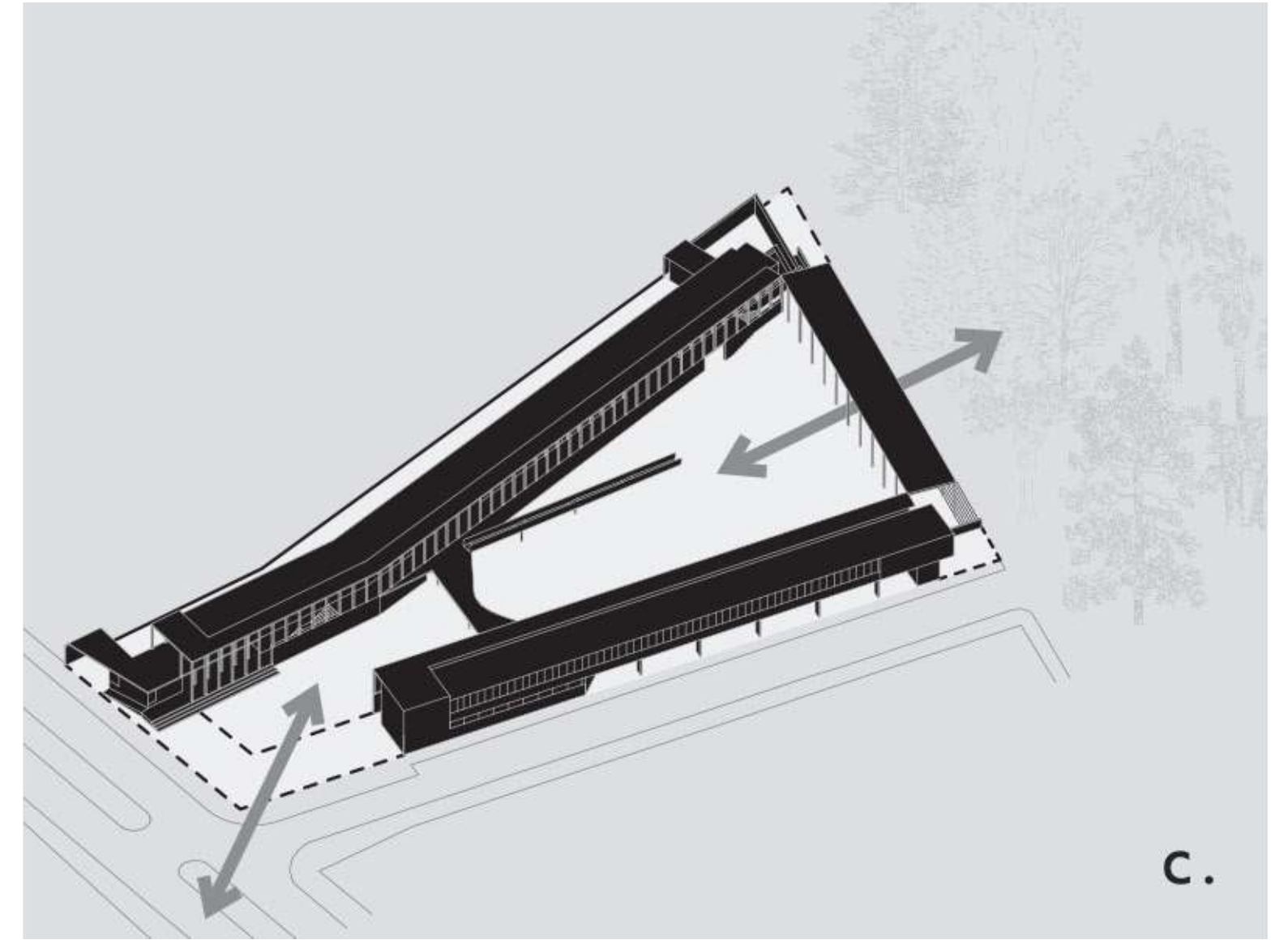
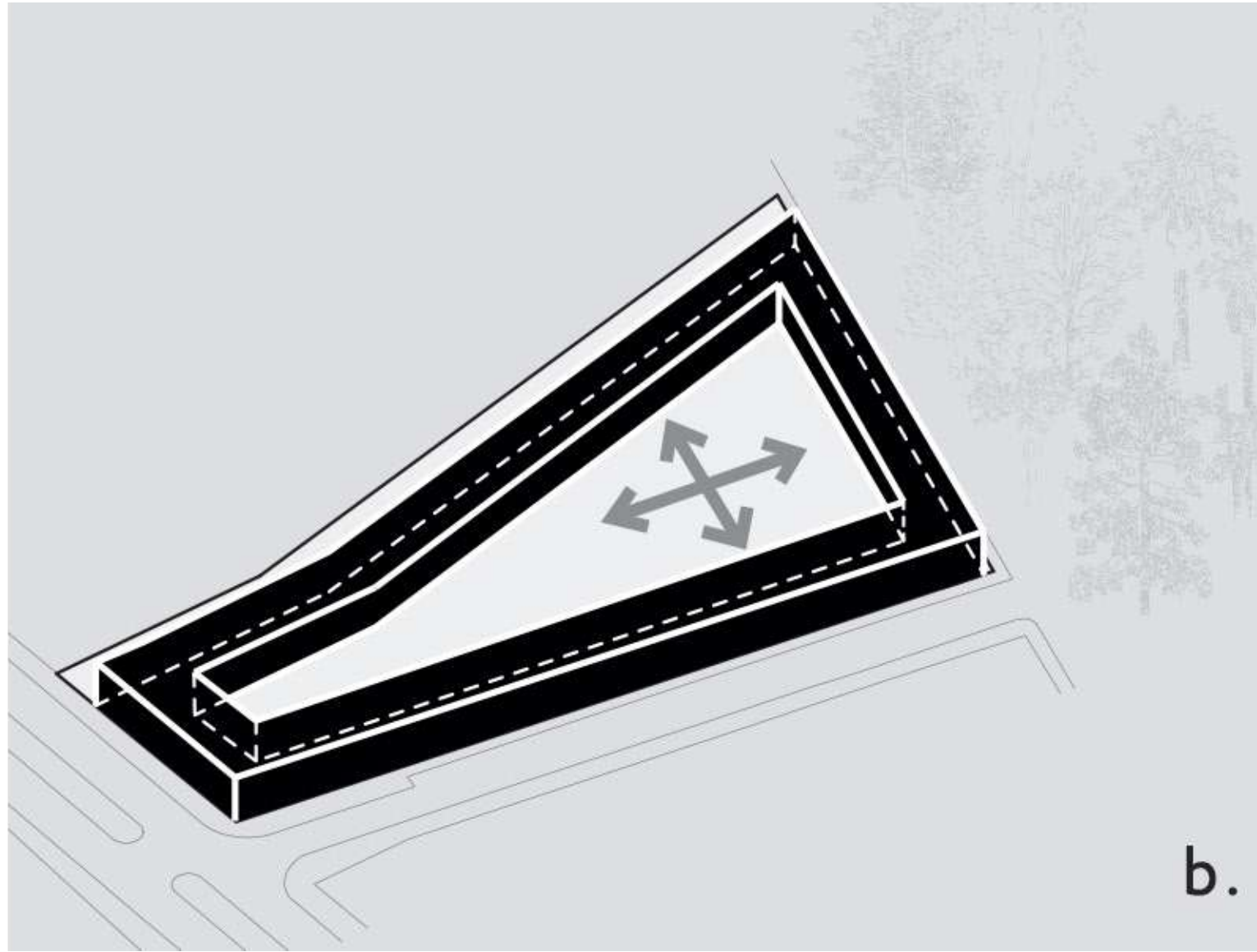
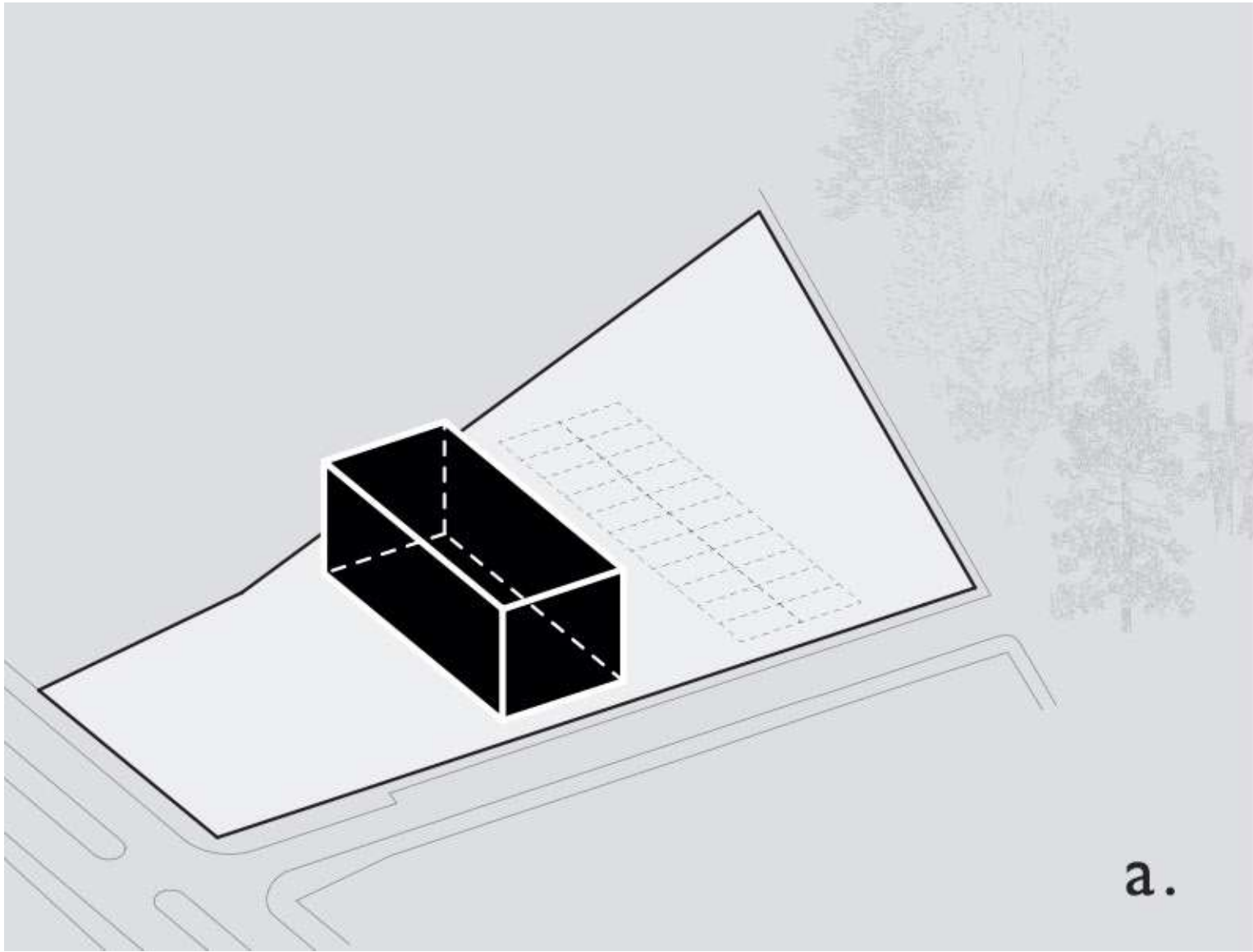


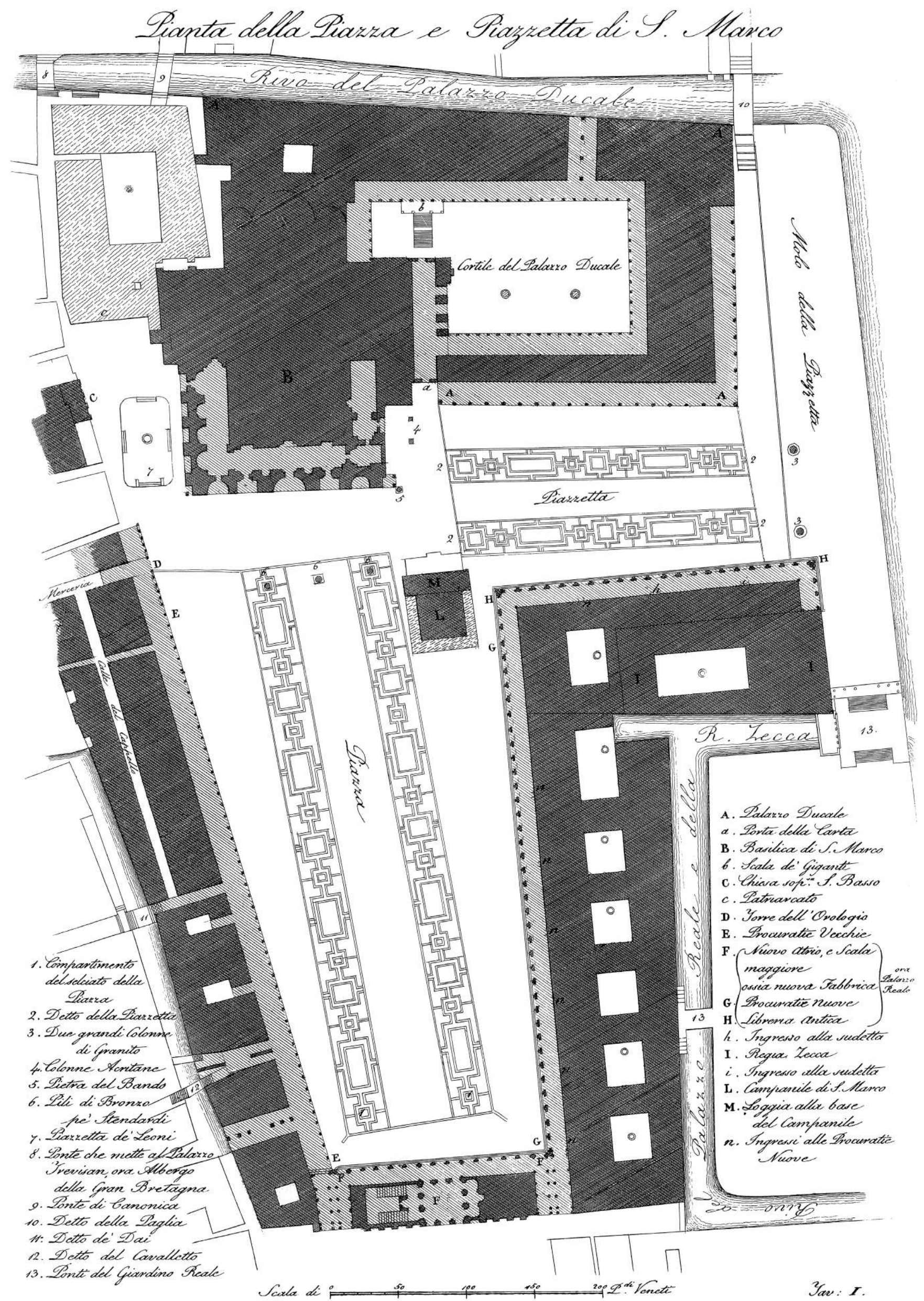




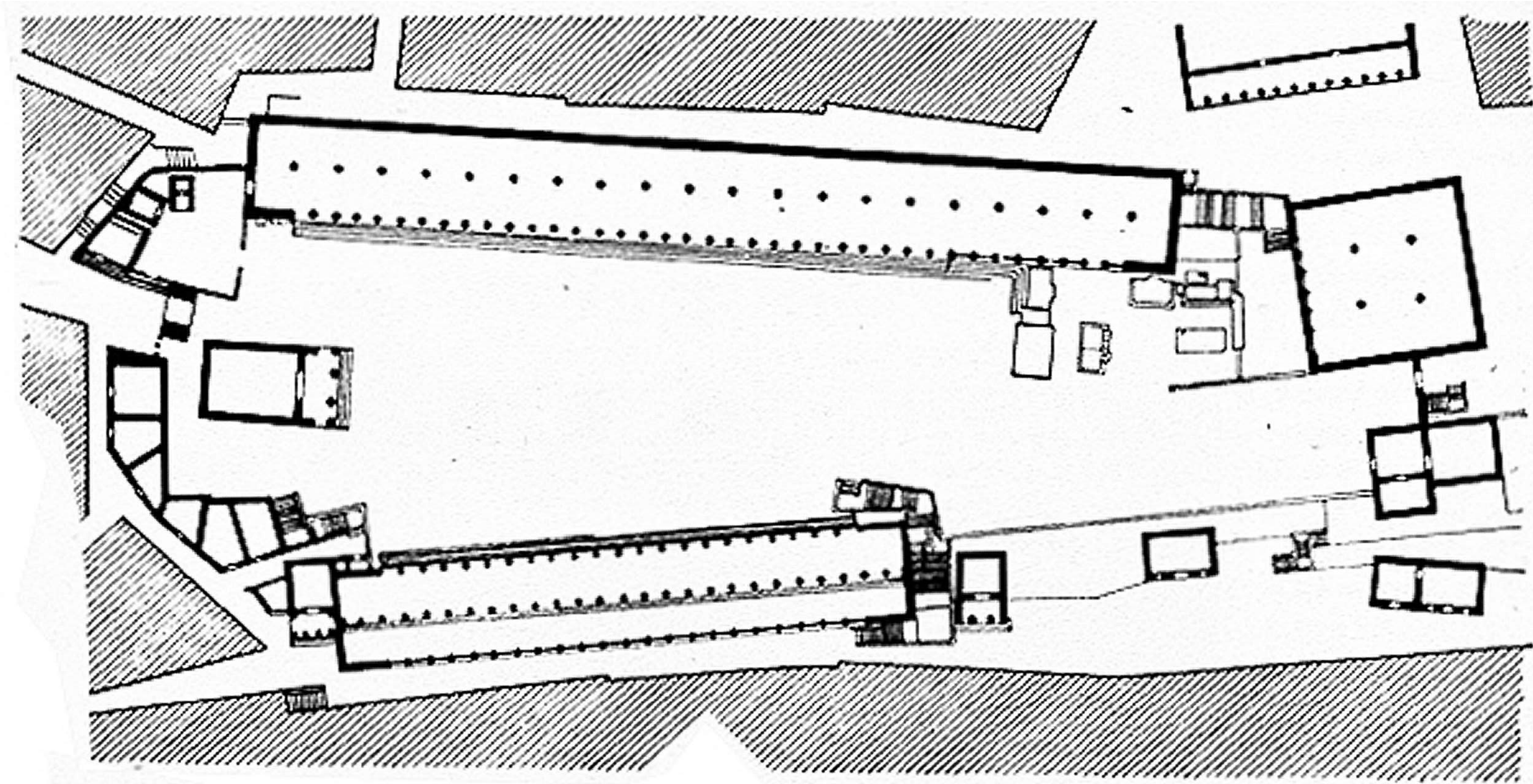






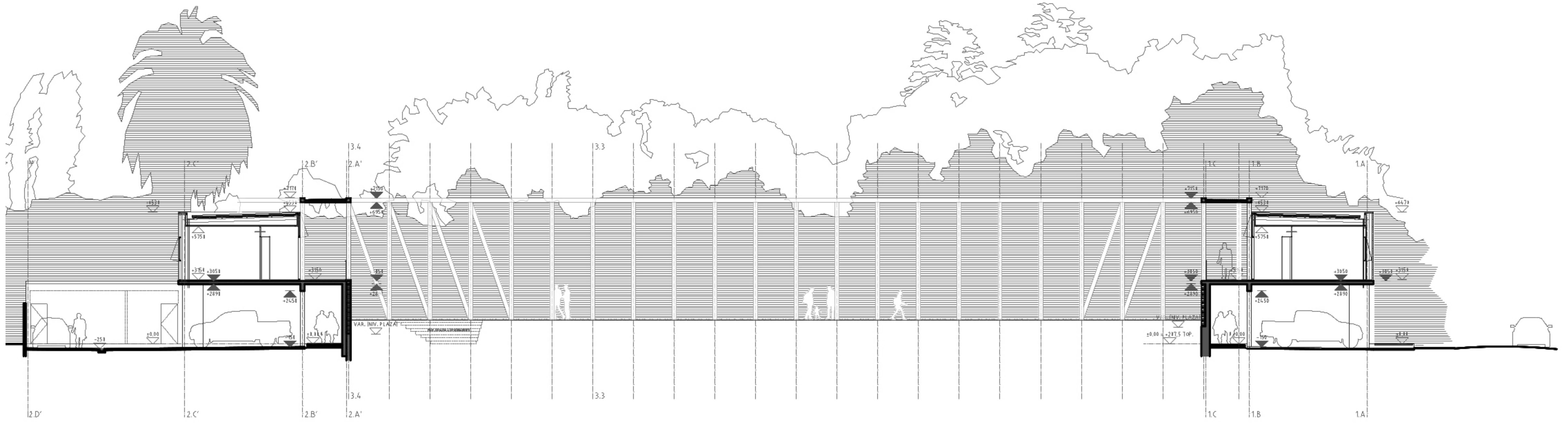


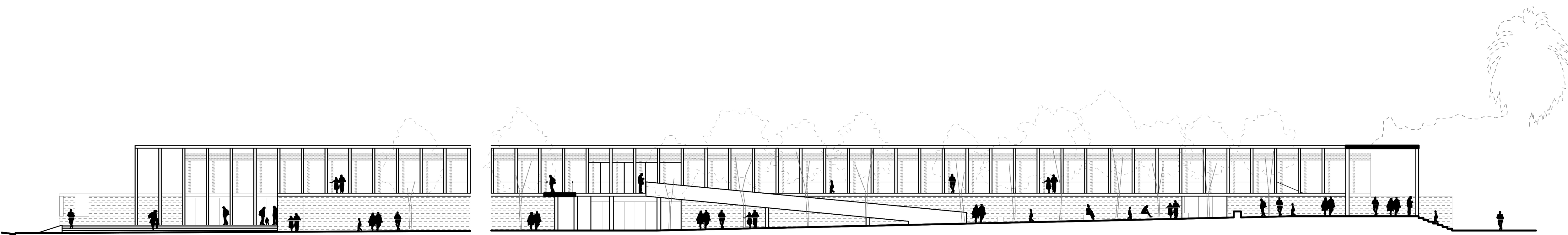
Pianta Piazza S. Marco. Antonio Quadri (Arch.) Dionisio Moretti (Ill.), c.1831



Agora of Assos







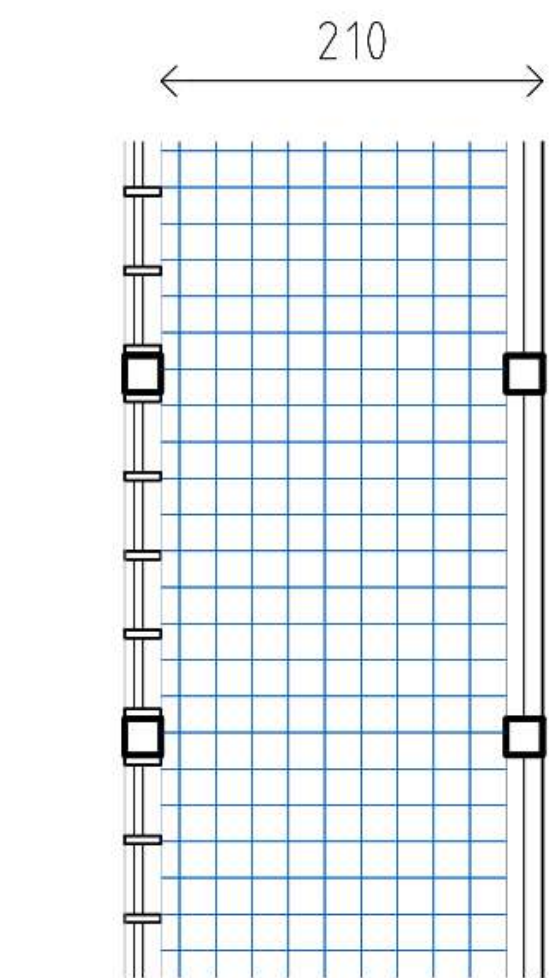
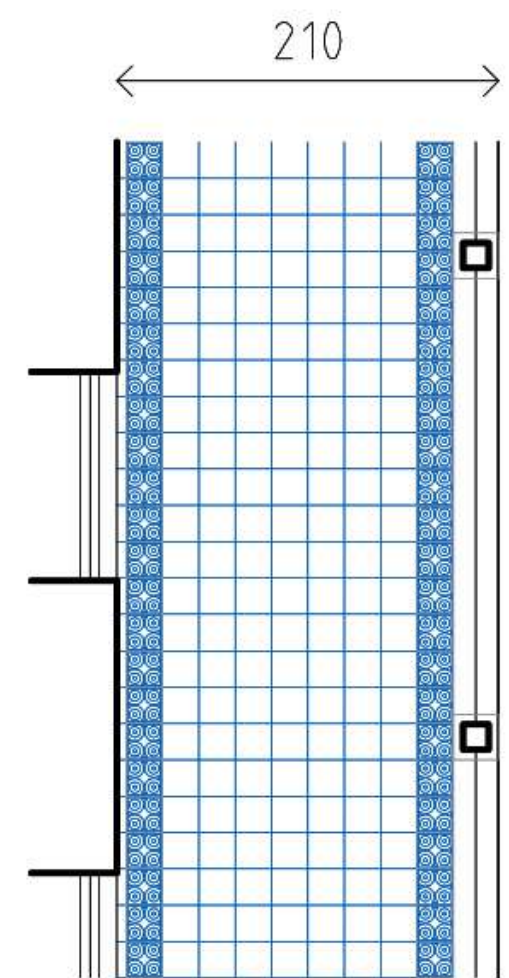
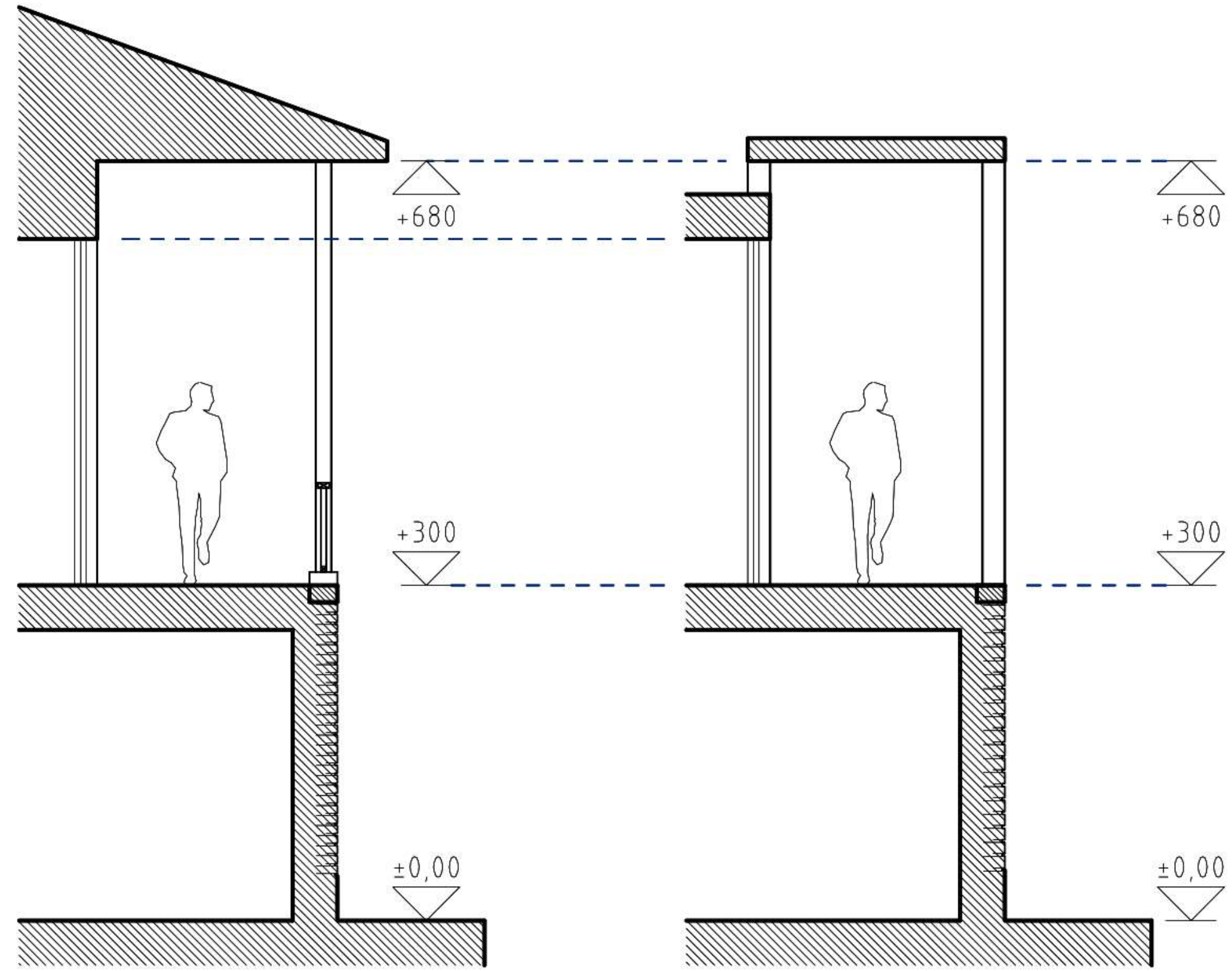




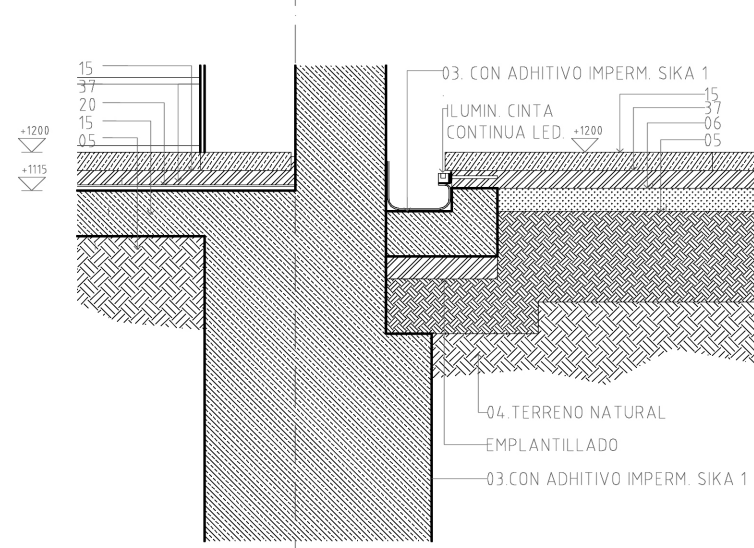
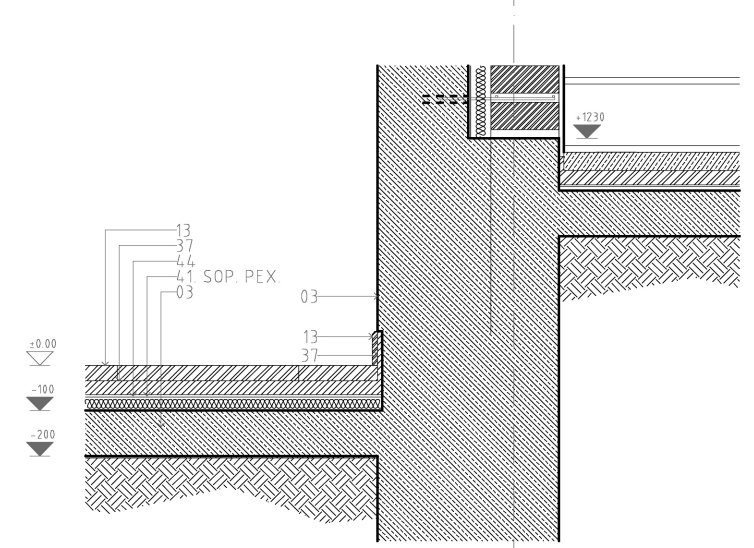
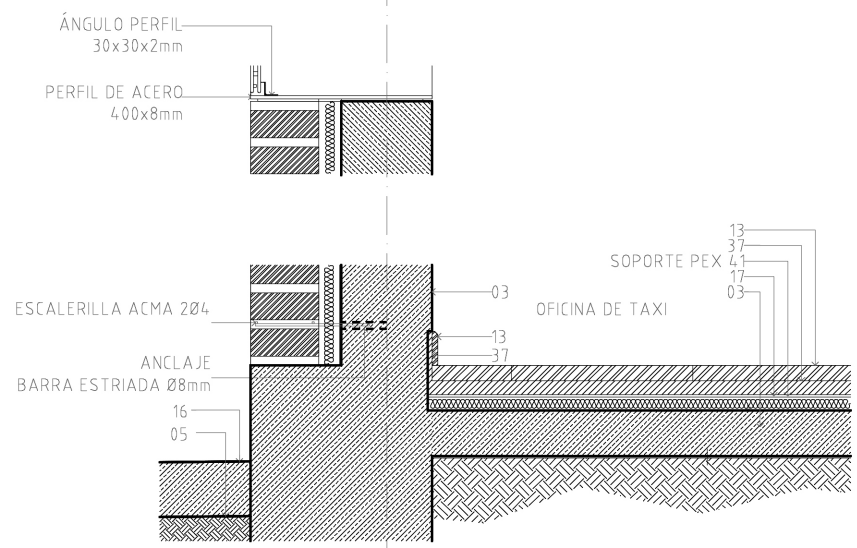
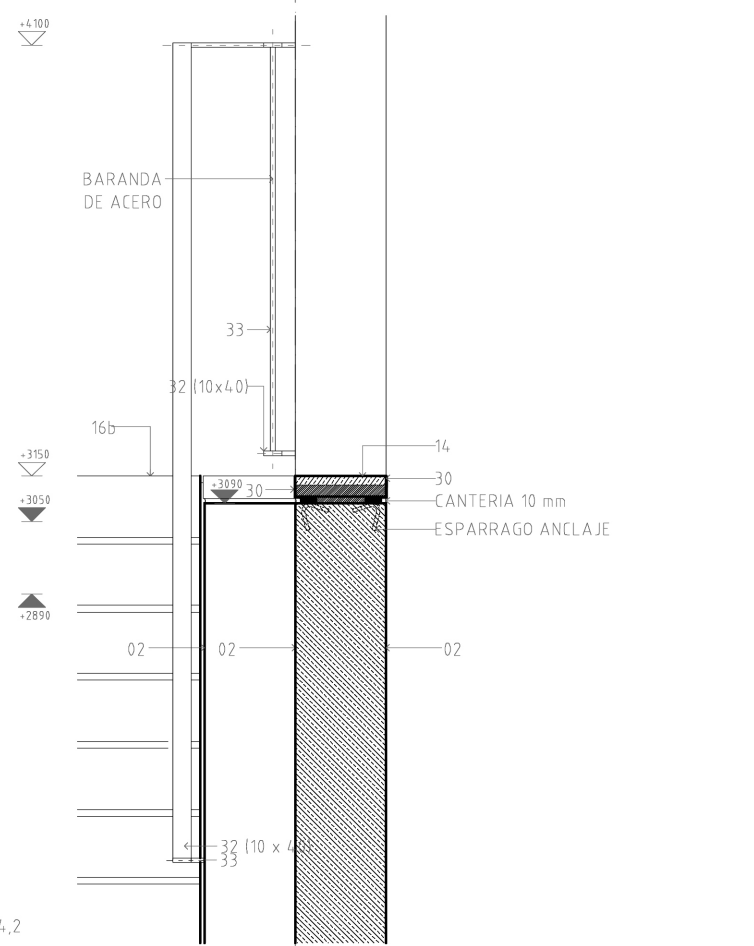
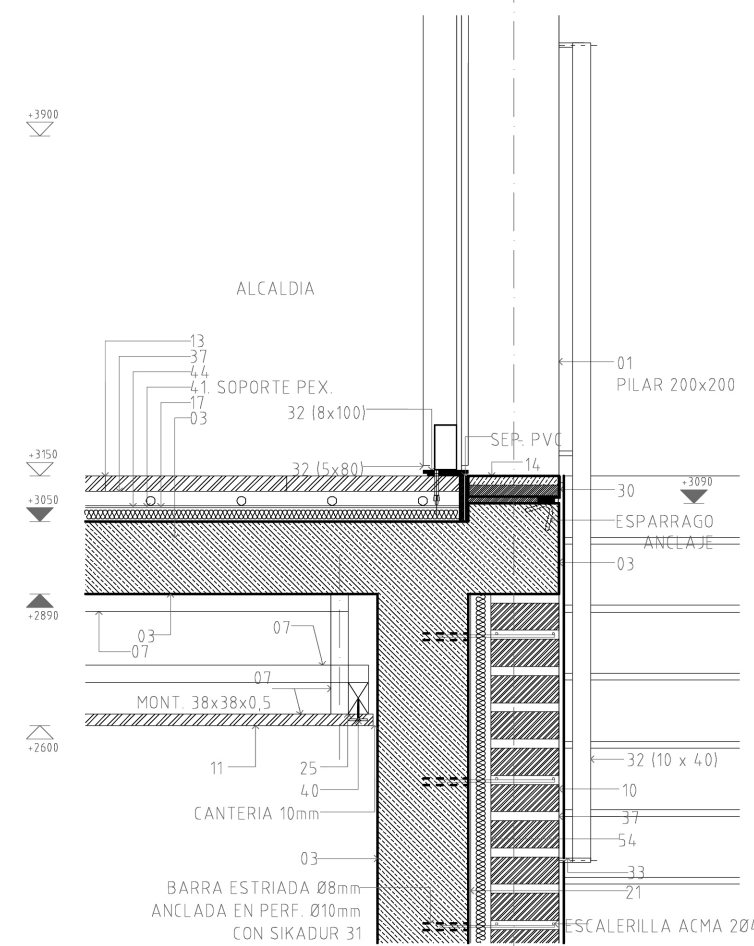
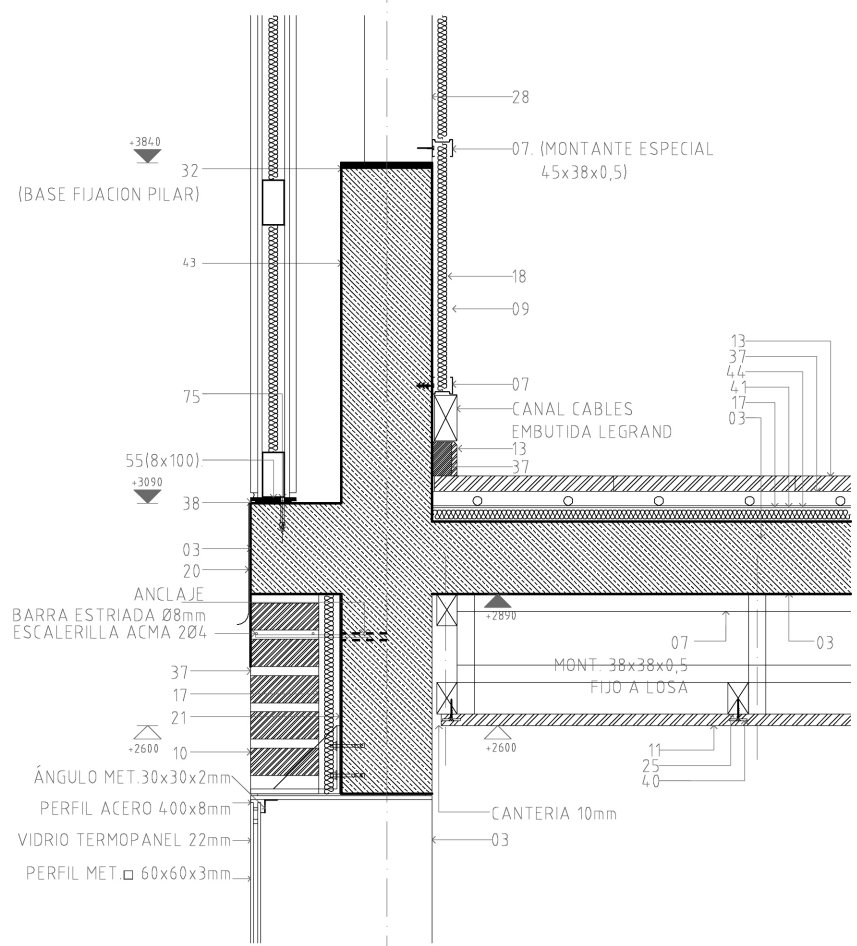
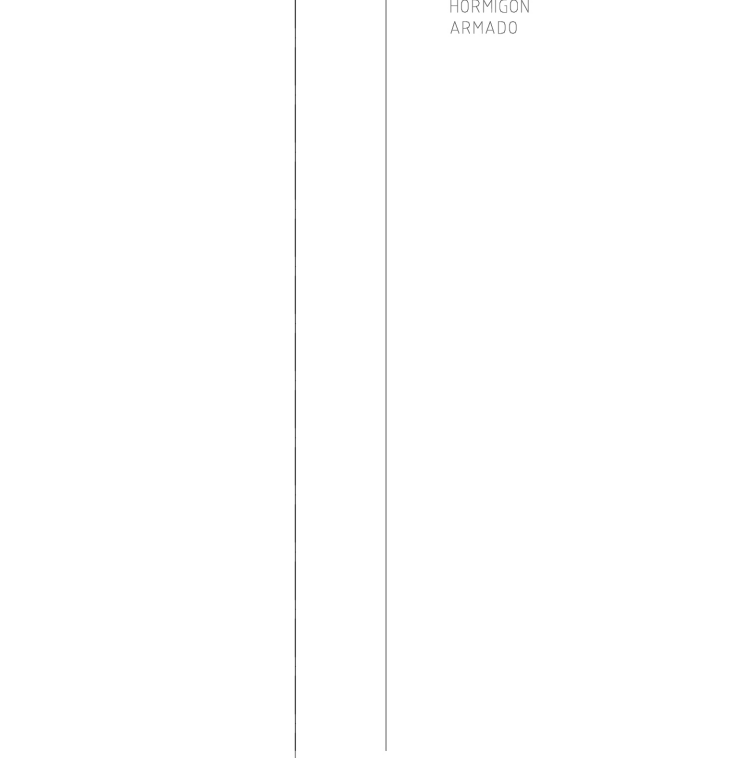
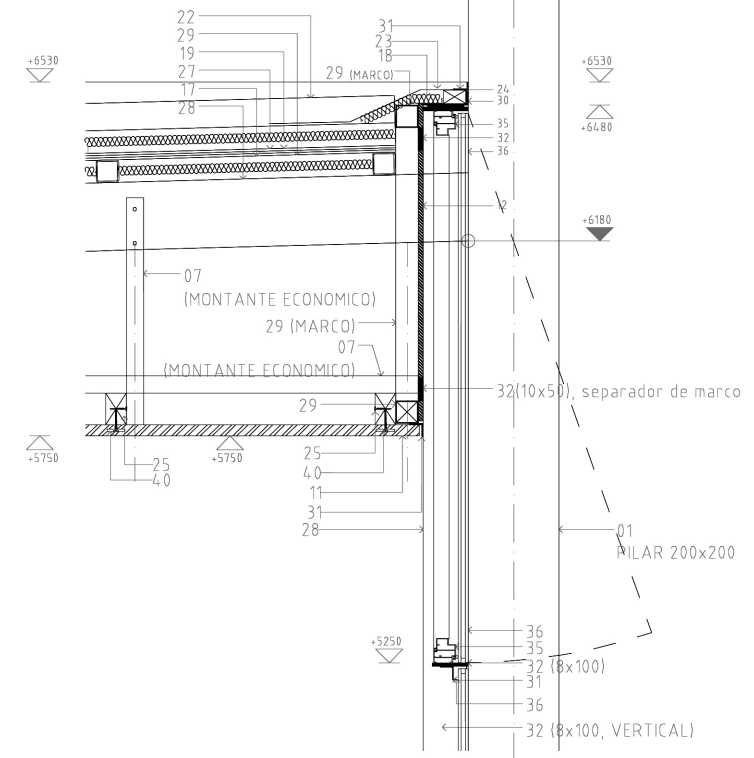
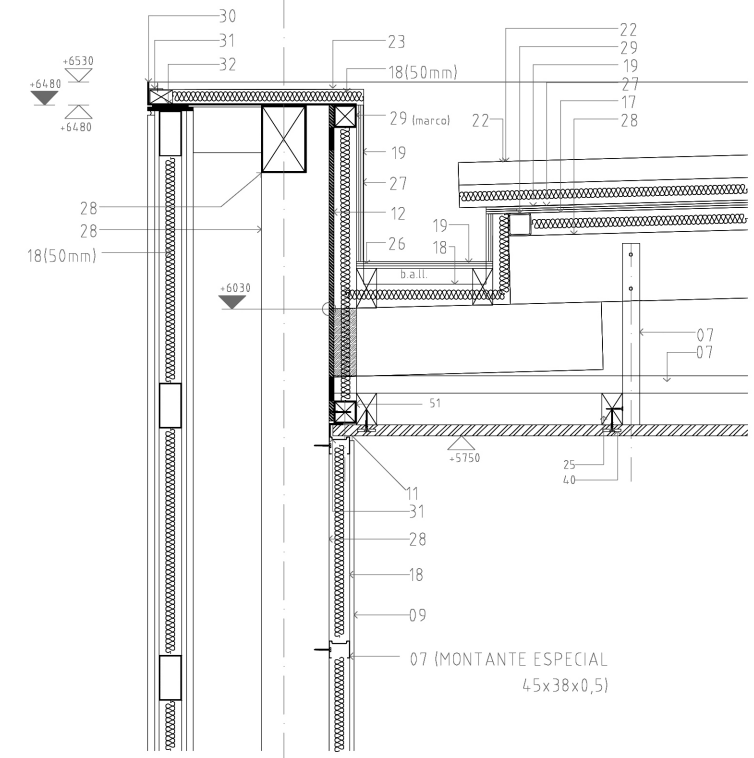












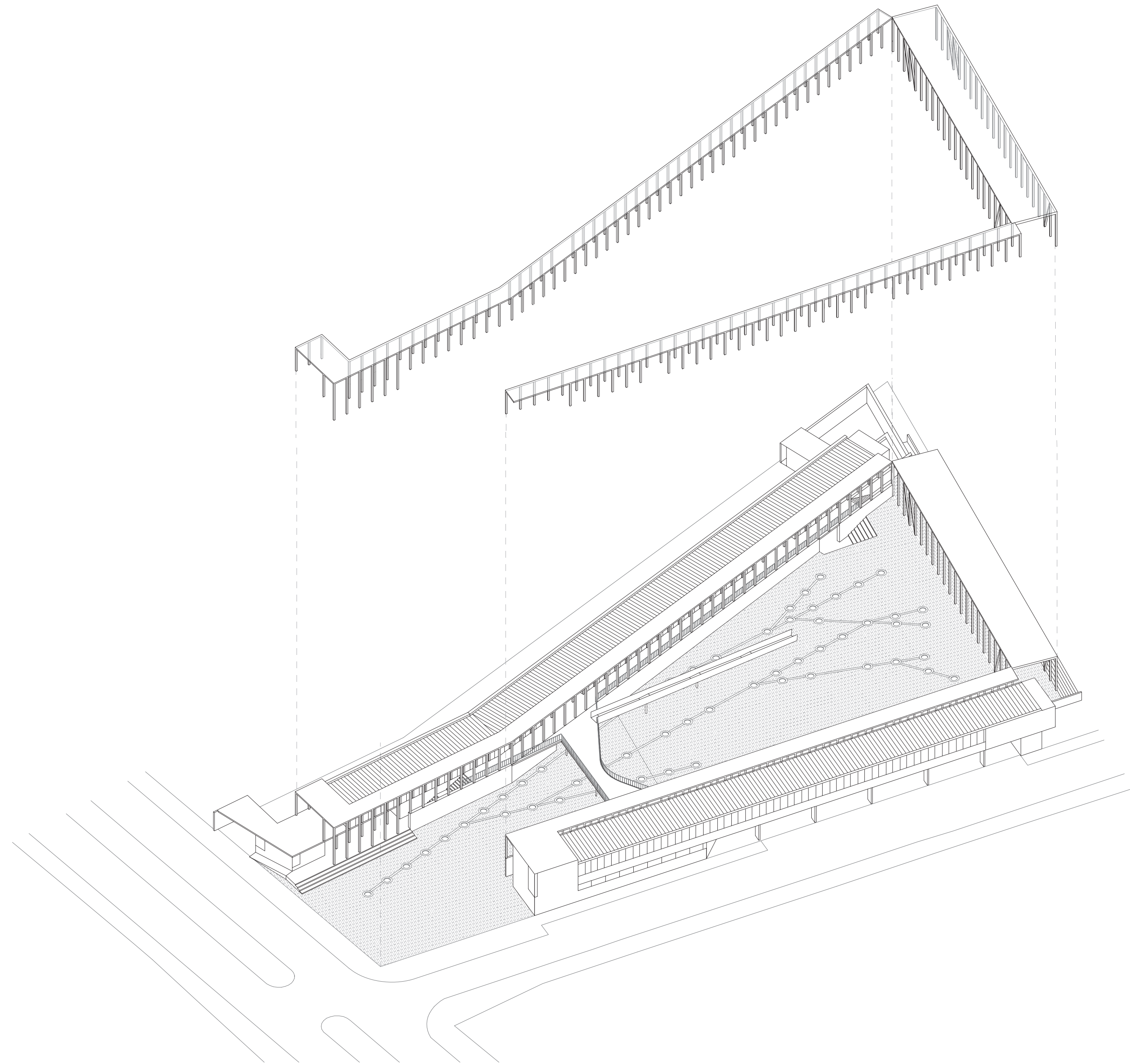
1A

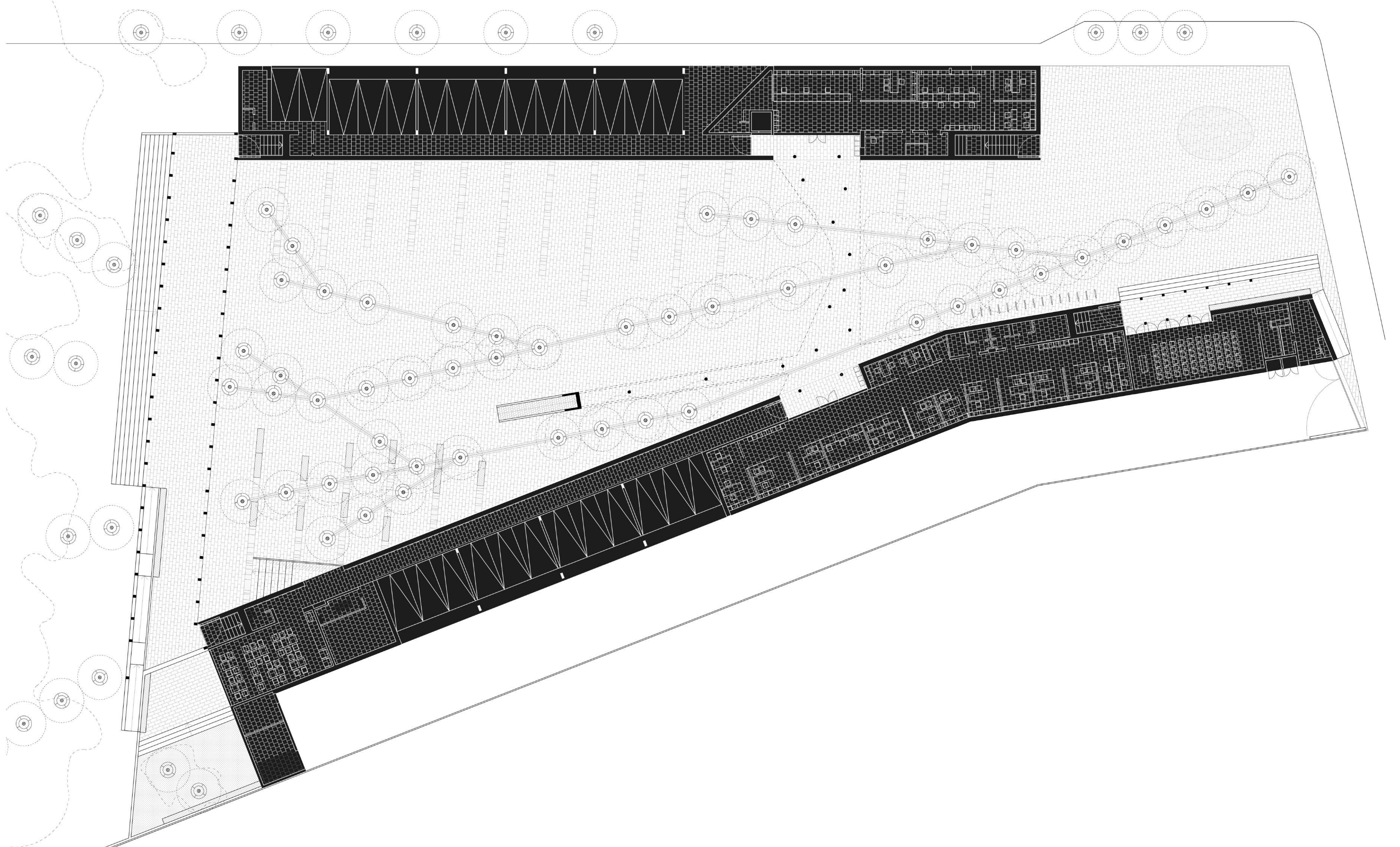
1B

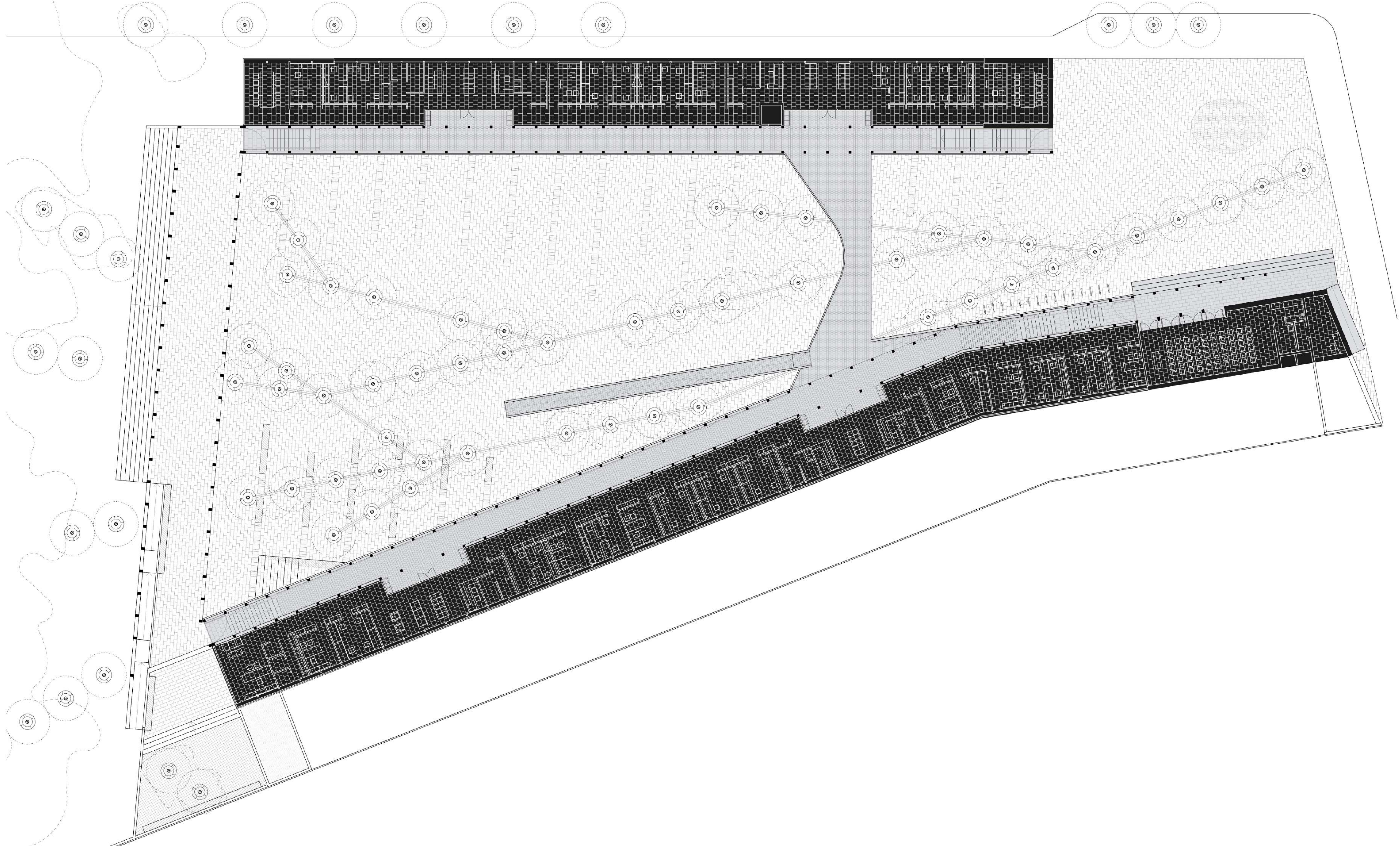
1C































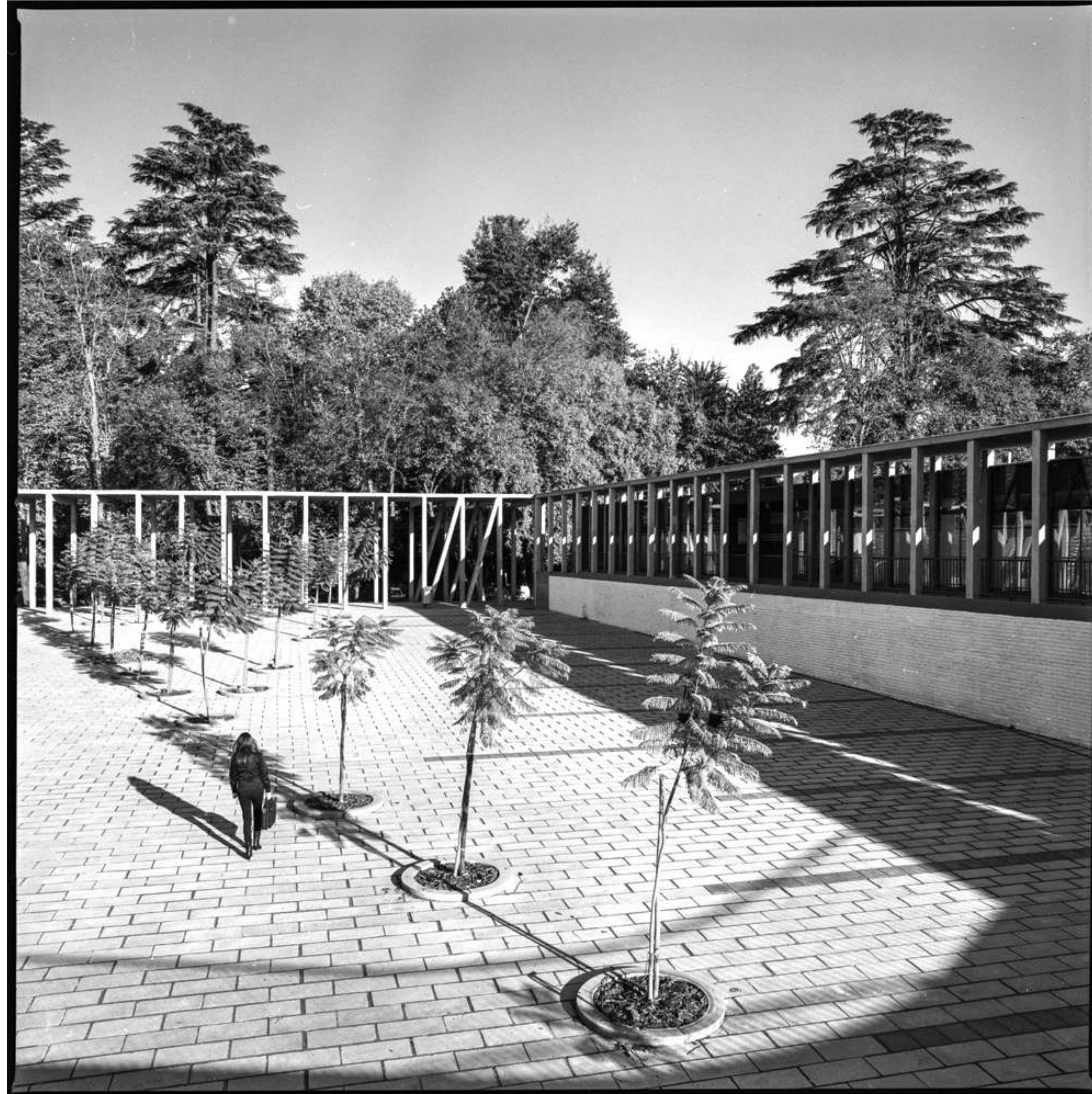






























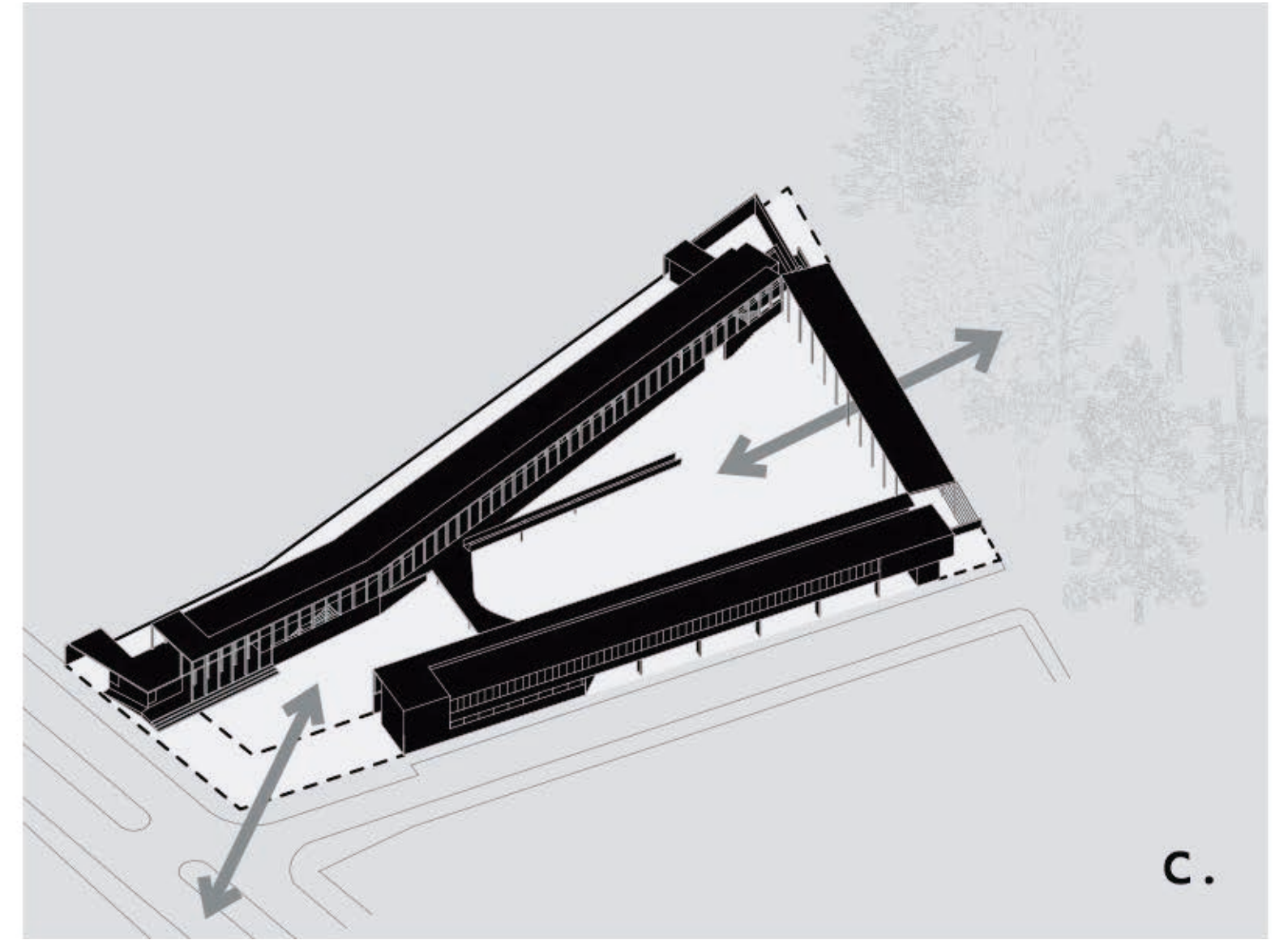
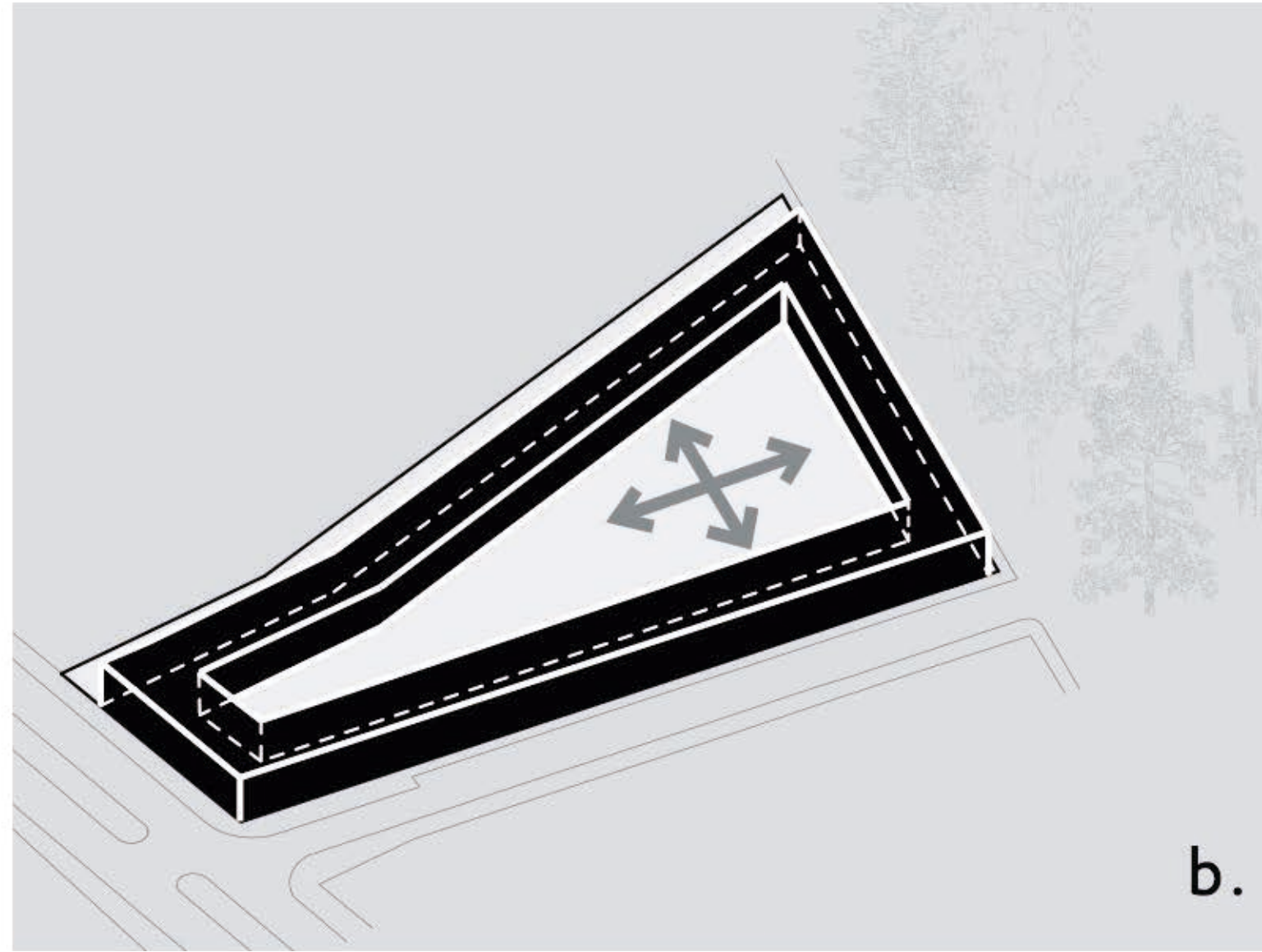
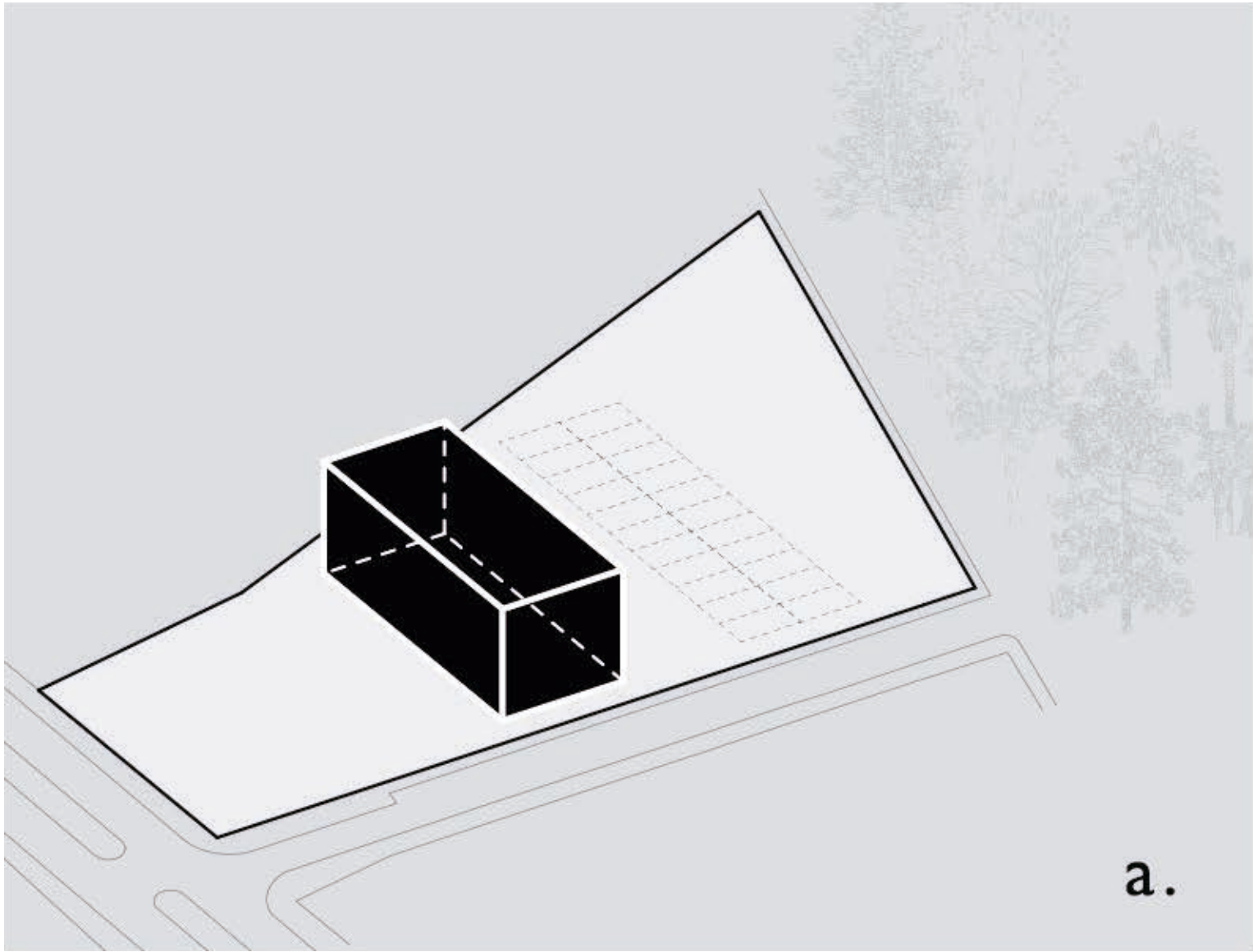


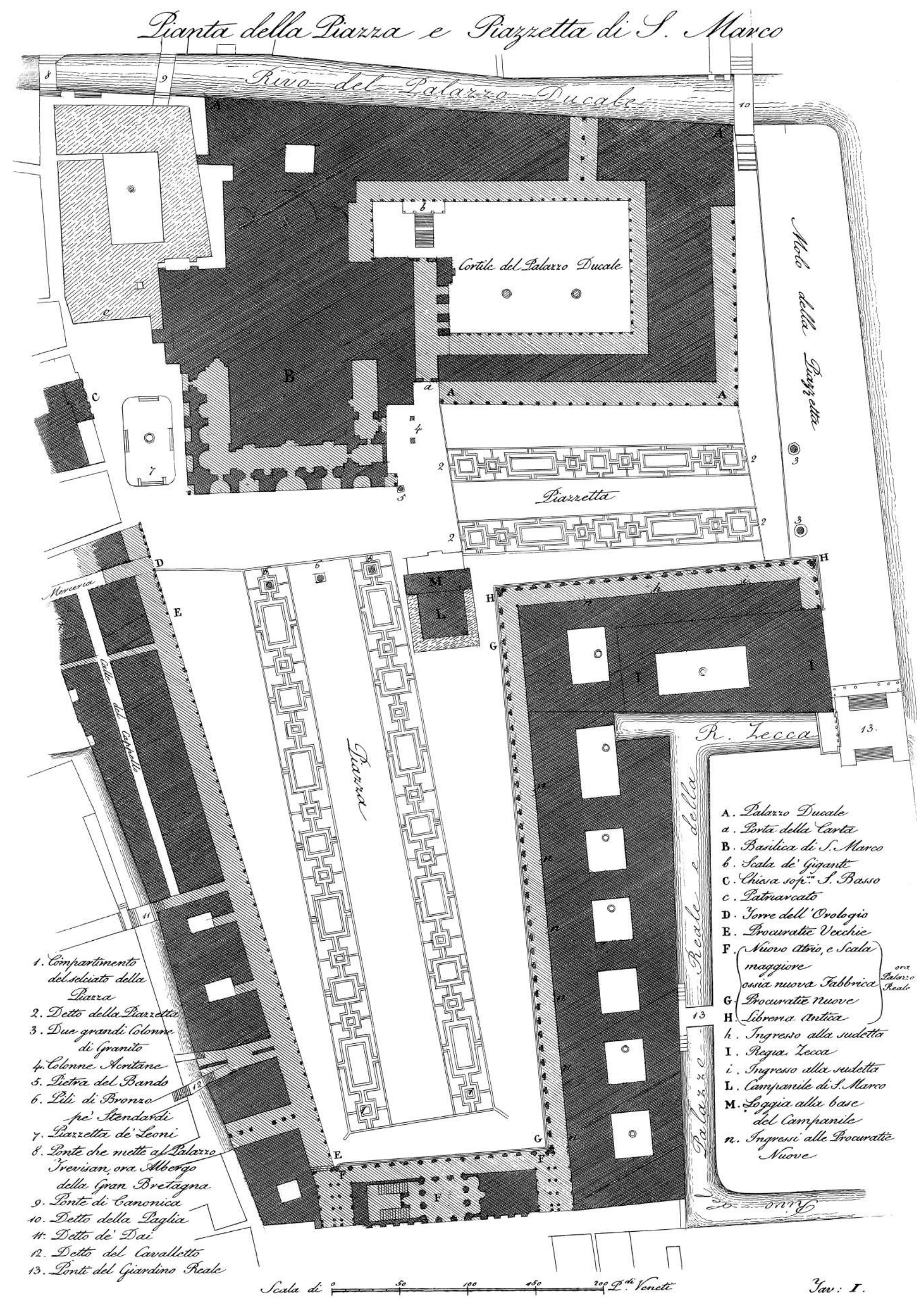


BEALS LYON ARQUITECTOS Alejandro Beals – Loreto Lyon



Nancagua, 2010

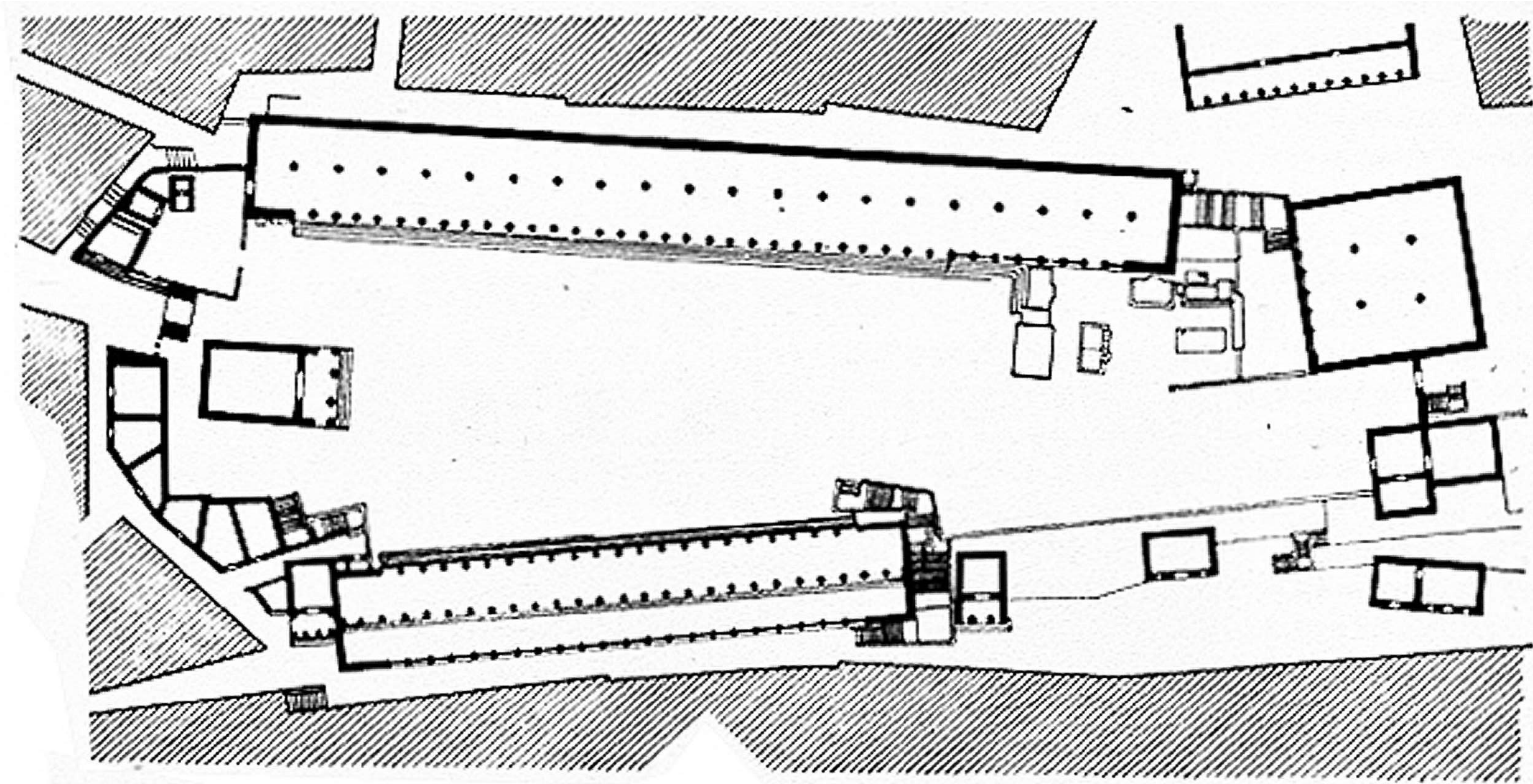




- A. Palazzo Ducale
- a. Porta della Carta
- B. Basilica di S. Marco
- b. Scala de' Giganti
- C. Chiav sopra S. Basilio
- c. Portinaccio
- D. Torre dell'Orologio
- E. Procuratie Vecchie
- F. Nuovo atrio, e Scala maggiore ora Palazzo Reale
- G. Procuratie Nuove
- H. Libreria antica
- h. Ingresso alla sudelta
- I. Regia Lecca
- i. Ingresso alla sudelta
- L. Campanile di S. Marco
- M. Loggia alla base del Campanile
- n. Ingressi alle Procuratie Nuove

- 1. Compartimento del seduto della Piazza
- 2. Datto della Piazzetta
- 3. Due grandi Colonne di granito
- 4. Colonne Montane
- 5. Pietra del Brande
- 6. Pilè di Bronzo pe' Stendardi
- 7. Piazzetta de' Leoni
- 8. Ponte che mette al Palazzo Treviano, ora Albergo della Gran Bretagna
- 9. Ponte di Cerimonice
- 10. Datto della Piazzetta
- 11. Datto de' Drai
- 12. Datto del Cavalletto
- 13. Ponte del Giardino Reale

Pianta Piazza S. Marco. Antonio Quadri (Arch.) Dionisio Moretti (Ill.), c.1831



Agora of Assos



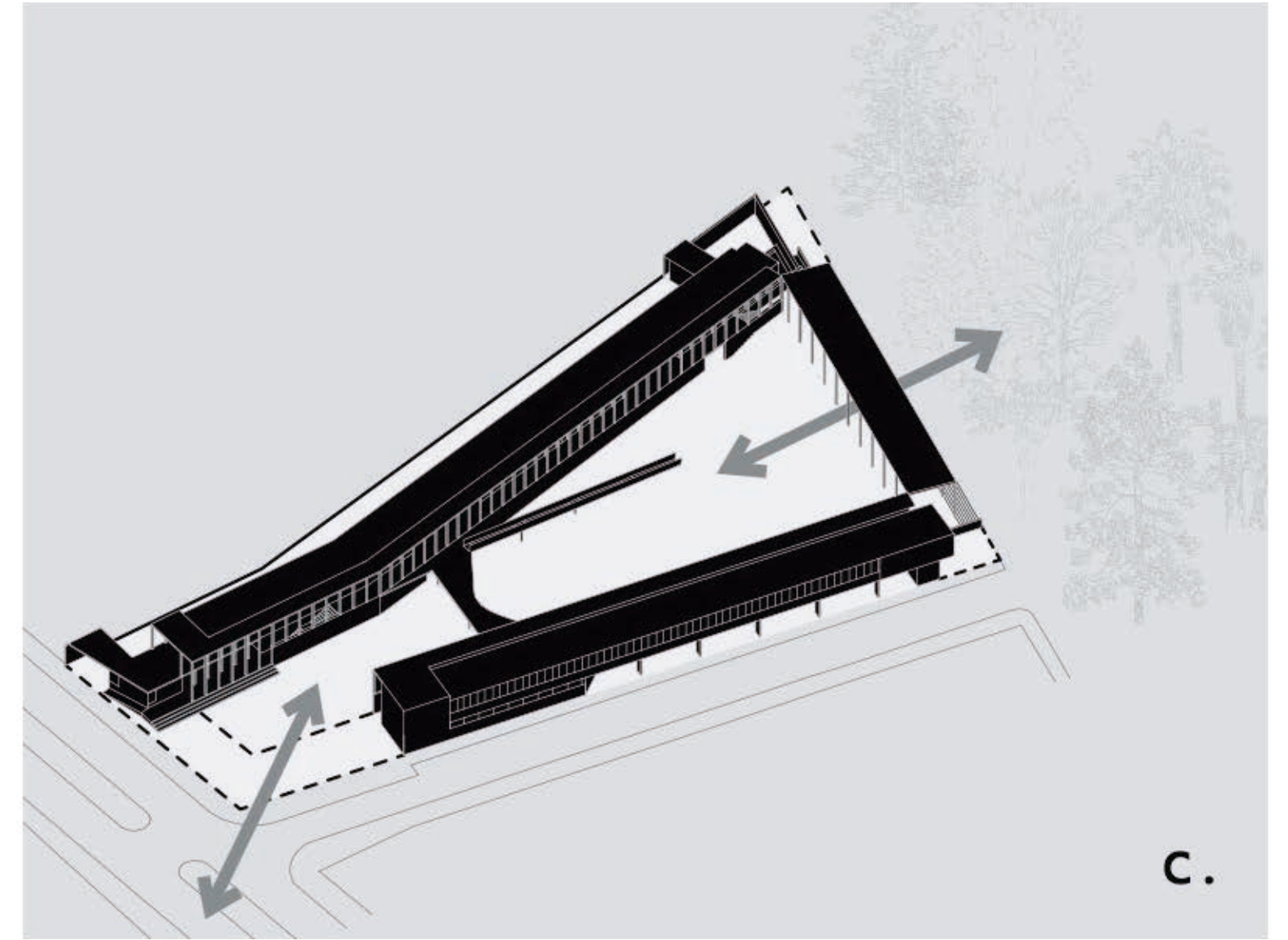
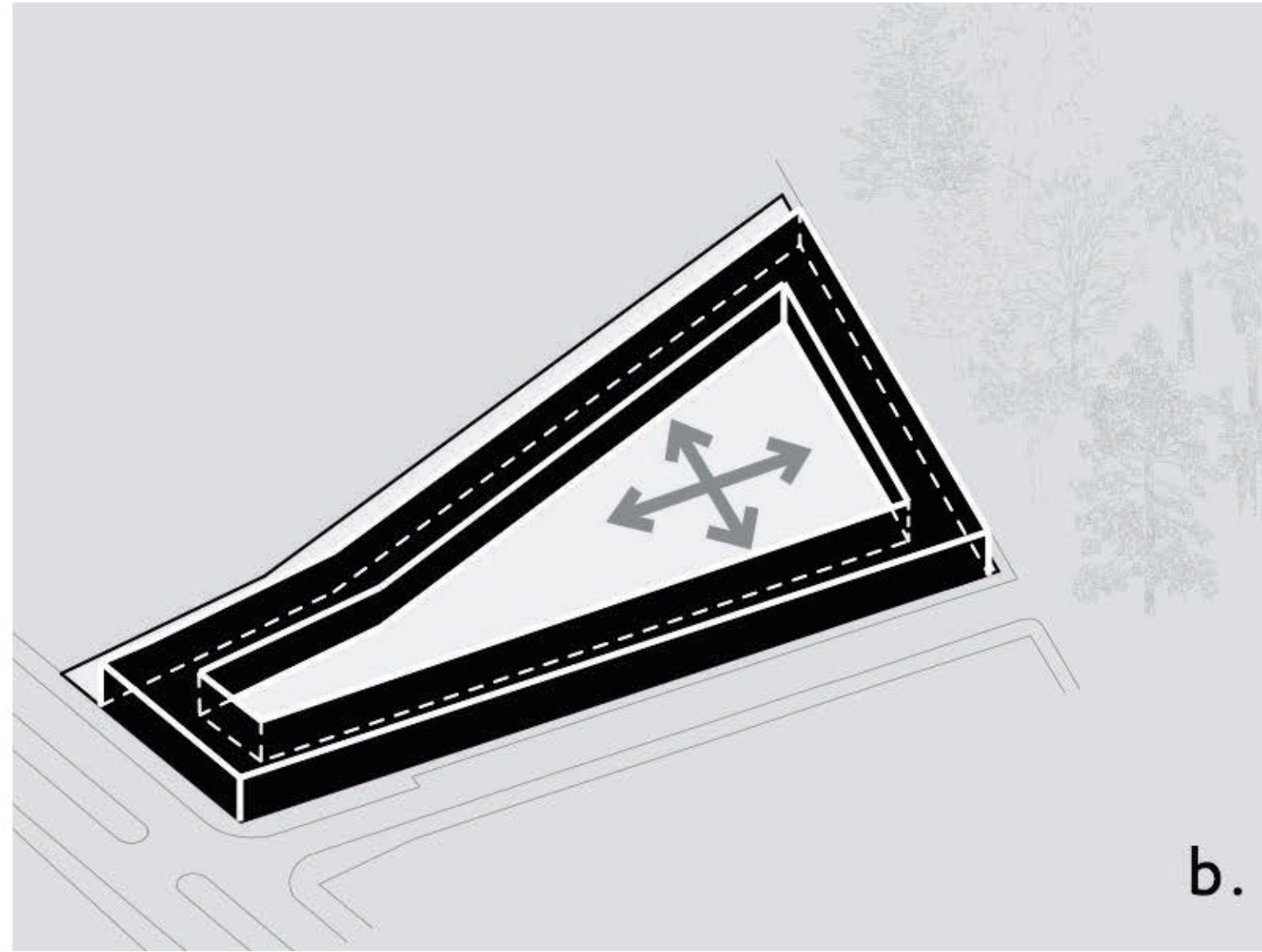
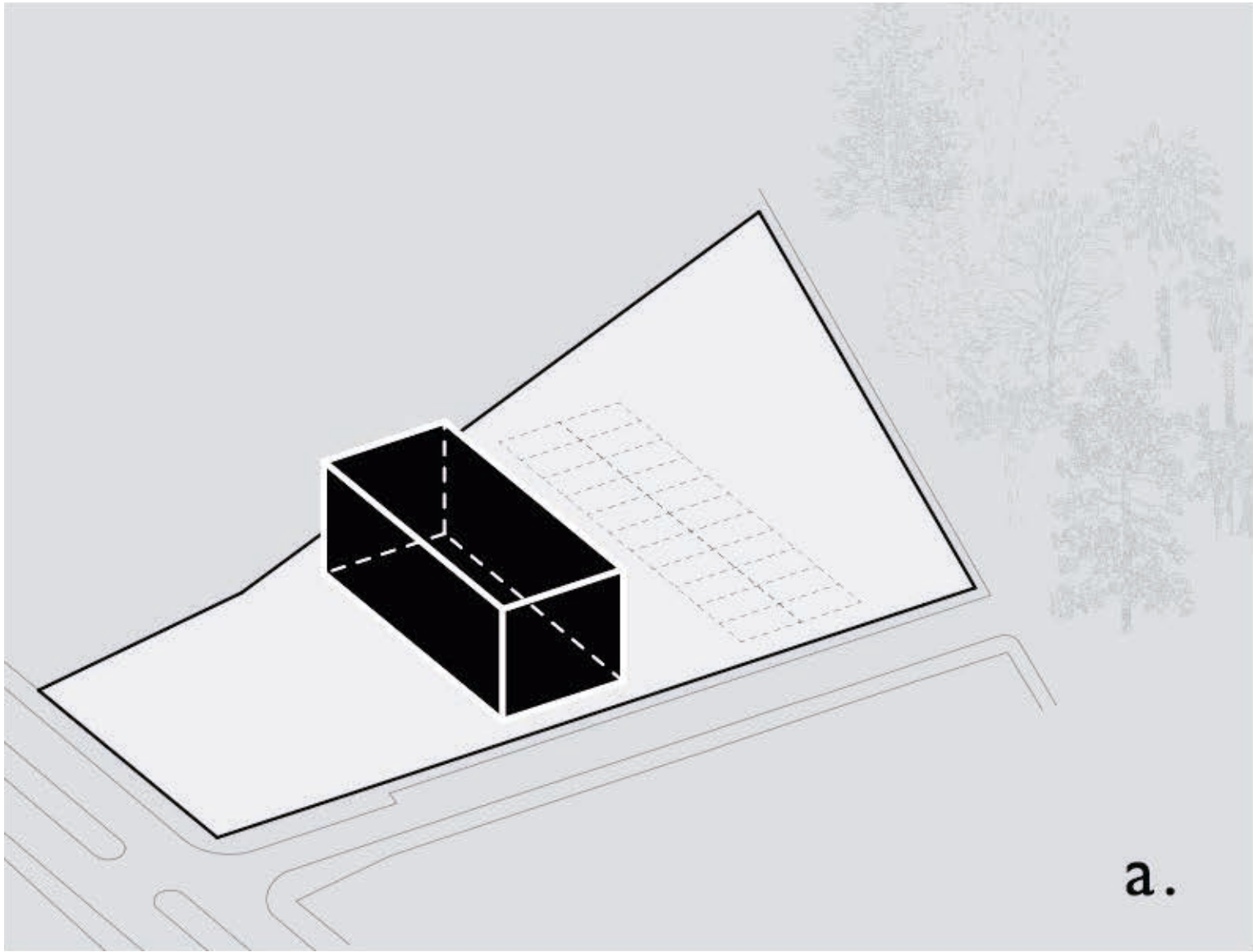
BEALS LYON ARQUITECTOS Alejandro Beals – Loreto Lyon

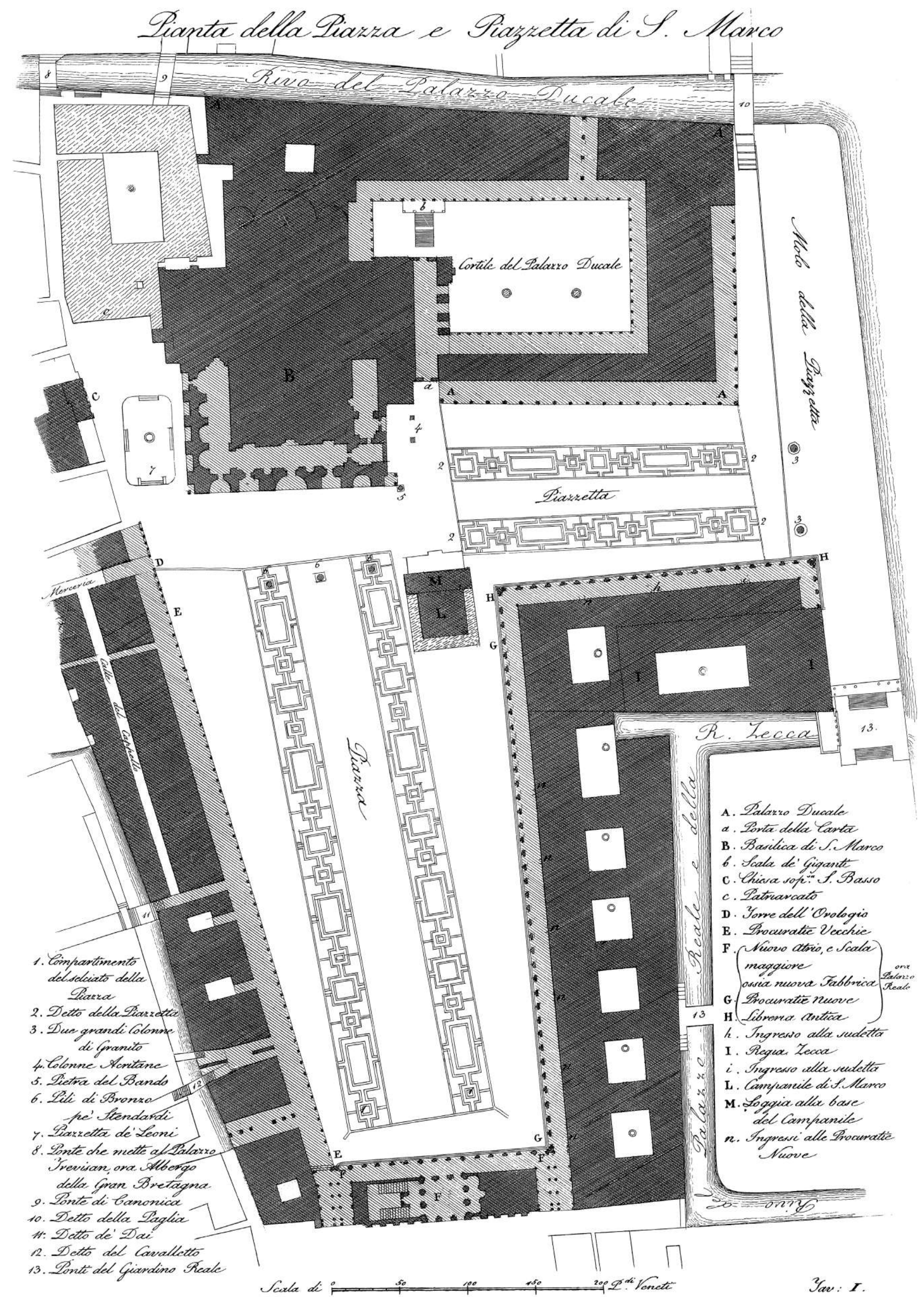


BEALS LYON ARQUITECTOS    Alejandro Beals - Loreto Lyon

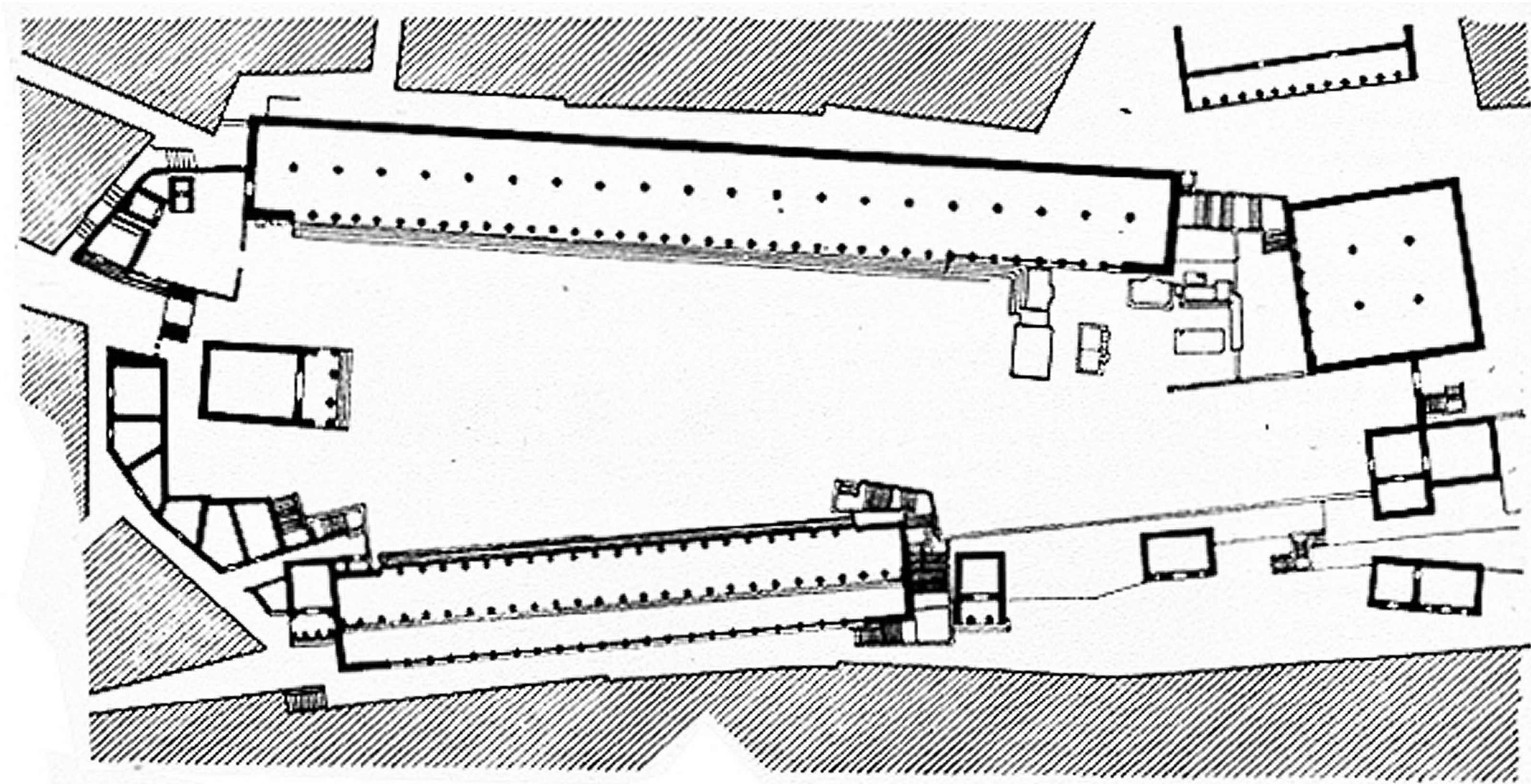


Nancagua, 2010





Pianta Piazza S. Marco. Antonio Quadri (Arch.) Dionisio Moretti (Ill.), c.1831



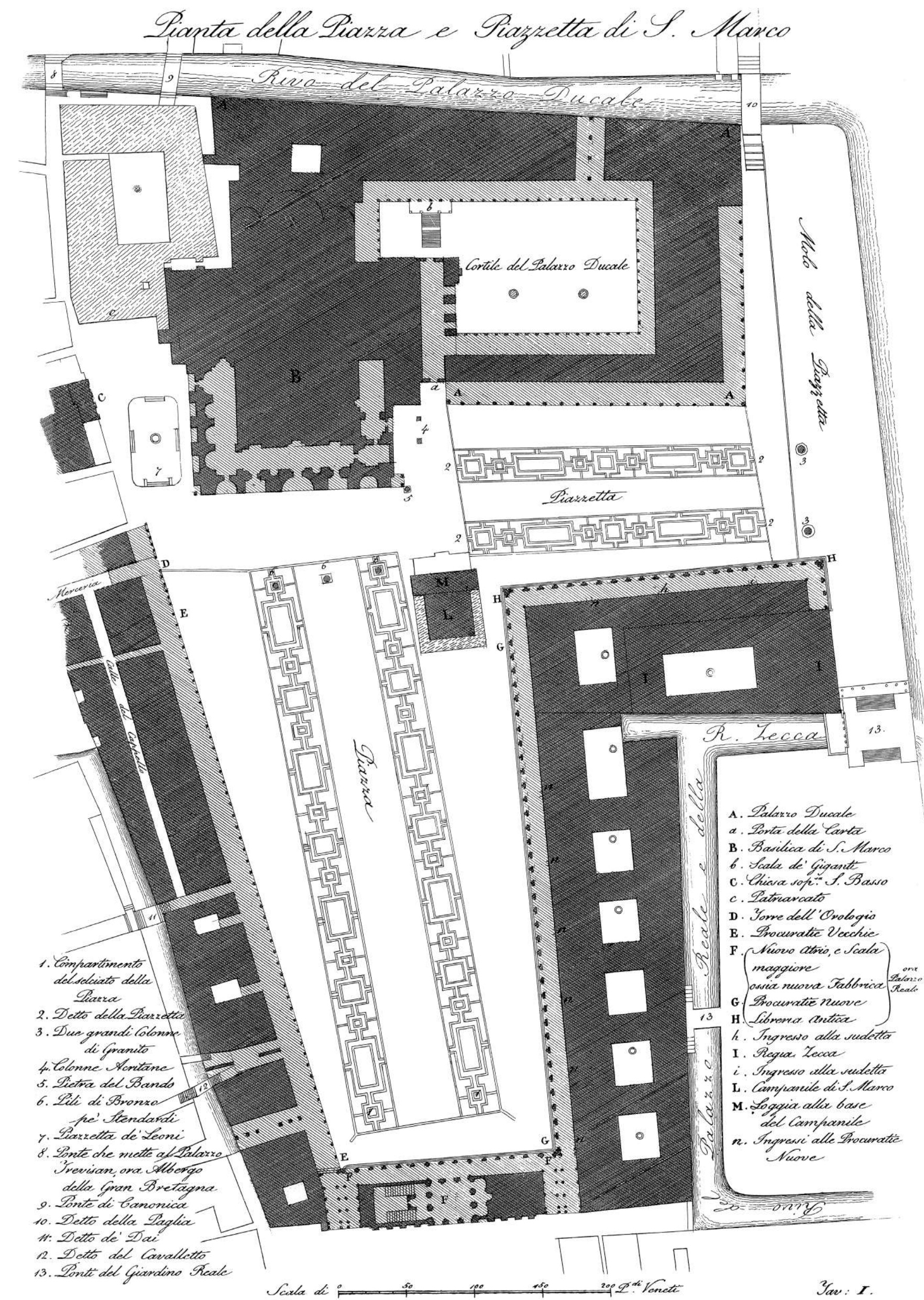
Agora of Assos



BEALS LYON ARQUITECTOS Alejandro Beals – Loreto Lyon

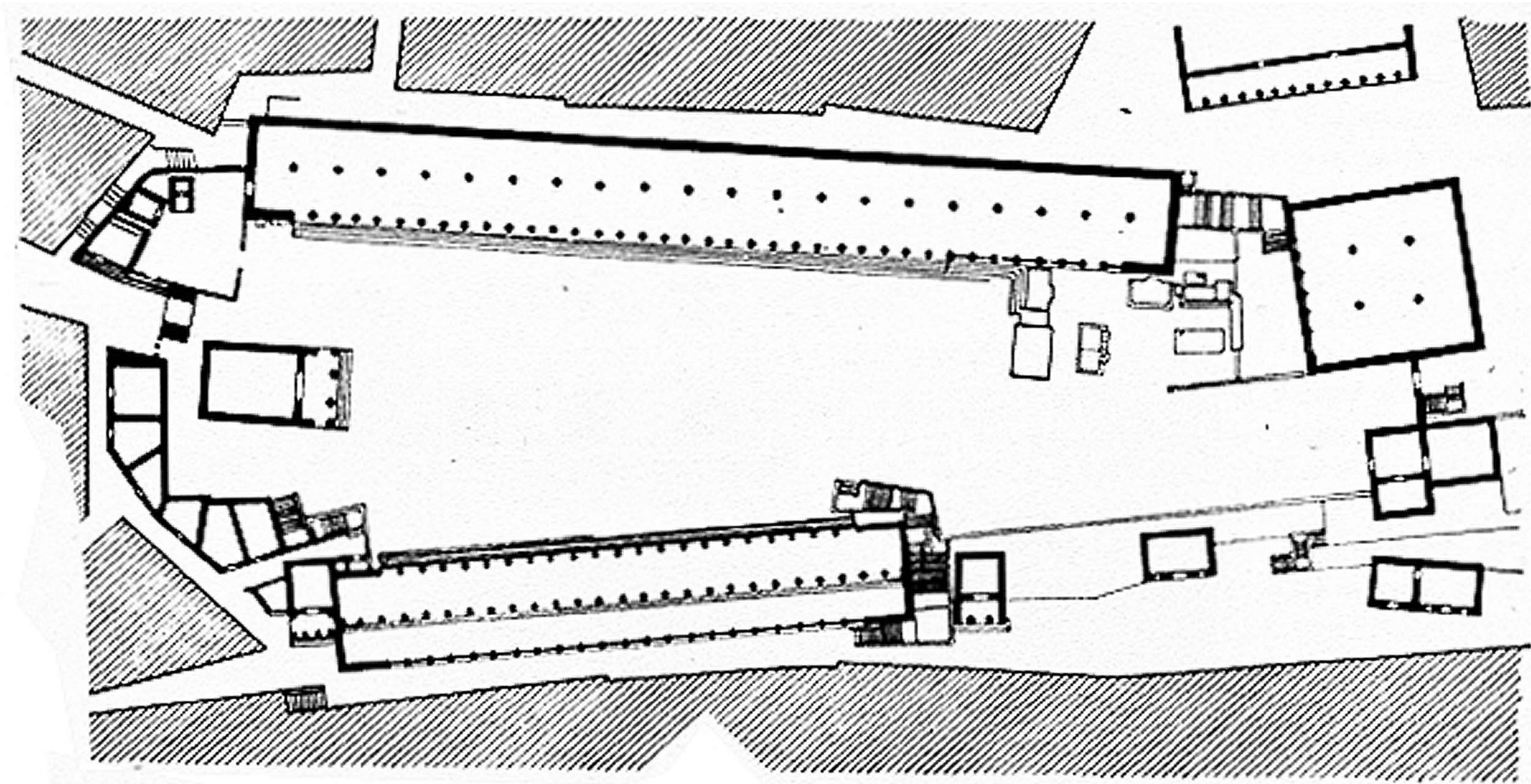


Nancagua, 2010



Pianta Piazza S. Marco. Antonio Quadri (Arch.) Dionisio Moretti (Ill.), c.1831





Agora of Assos



BEALS LYON ARQUITECTOS Alejandro Beals – Loreto Lyon